



POLITECNICO DI
TORINO
DISTR

Project S4: ITALIAN STRONG MOTION DATA BASE
Application of Surface wave methods
for seismic site characterization
Sestri Levante

APPLICATION OF SURFACE WAVE METHODS FOR SEISMIC SITE CHARACTERIZATION

SESTRI LEVANTE (SEL)

Responsible:
Sebastiano Foti

Co-workers:
Giovanni Bianchi
Cesare Comina
Margherita Maraschini

FINAL REPORT

Turin, 31/7/2009



INDEX

1	Introduction	3
2	Surface wave method.....	4
2.1	Acquisition	5
2.2	Processing of surface waves	6
2.3	Inversion of surface waves	6
2.4	Numerical code	7
3	Sestri Levante – Surface wave results	7
	References	10

1 Introduction

In this report a summary of the results obtained for the characterization of the accelerometric station of Sestri Levante of the RAN within Project S4 is presented. The analysis was performed using active surface wave method, the refraction data was not used, because a velocity inversion is expected.

The map and the site location are shown in Figure 1 and Figure 2. A stiff superficial layer, composed by gravels and pebbles, can be observed, which is used for the passage of trucks (Figure 2). According to geological information a shallow bedrock is expected.



Figure 1 Sestri Levante: maps



Figure 2 Sestri Levante: site location

Goal of the seismic tests is the estimation of the S-wave velocity profile of the subsoil, and in particular the position of the bedrock.



The primary use of surface wave testing is related to site characterization in terms of shear wave velocity profile. The V_S profile is of primary interest for seismic site response studies and for studies of vibration of foundations and vibration transmission in soils. Other applications are related to the prediction of settlements and to soil-structure interaction.

With respect to the evaluation of seismic site response, it is worth noting the affinity between the model used for the interpretation of surface wave tests and the model adopted for most site responses study. Indeed the application of equivalent linear elastic methods is often associated with layered models (e.g. the code SHAKE and all similar approaches). This affinity is also particularly important in the light of equivalence problems, which arise because of non-uniqueness of the solution in inverse problems. Indeed profiles which are equivalent in terms of Rayleigh wave propagation are also equivalent in term of seismic amplification (Foti et al., 2009).

Many seismic building codes introduce the weighted average of the shear wave velocity profile in the shallowest 30m as to discriminate class of soils to which a similar site amplification effect can be associated. The so-called $V_{S,30}$ can be evaluated very efficiently with surface wave method also because its average nature does not require the high level of accuracy that can be obtained with seismic borehole methods.

In the following a methodological summary of techniques and the description of the results is presented.

For Further explanation of surface wave methodologies, see document: Project S4: ITALIAN STRONG MOTION DATA BASE, Deliverable # 6, Application of Surface wave methods for seismic site characterization, May 2009.

2 Surface wave method

Surface wave method (S.W.M.) is based on the geometrical dispersion, which makes Rayleigh wave velocity frequency dependent in vertically heterogeneous media. High frequency (short wavelength) Rayleigh waves propagate in shallow zones close to the free surface and are informative about their mechanical properties, whereas low frequency (long wavelength) components involve deeper layers. Surface wave tests are typically devoted to the determination of a small strain stiffness profile for the site under investigation. Consequently the dispersion curve will be associated to the variation of medium parameters with depth.

The calculation of the dispersion curve from model parameters is the so called forward problem. Surface wave propagation can be seen as the combination of multiple modes of propagation, i.e. more than one possible velocity can be associated to each frequency value. Including higher modes in the inversion process allows the penetration depth to be increased and a more accurate subsoil profile to be retrieved.

If the dispersion curve is estimated on the basis of experimental data, it is then possible to solve the inverse problem, i.e. the model parameters are identified on the basis of the experimental data collected on the boundary of the medium. The result of the surface wave method is a one-dimensional S wave velocity soil profile.

The standard procedure for surface wave tests is reported in Figure 3. It can be subdivided into three main steps:

1. acquisition of experimental data;
2. signal processing to obtain the experimental dispersion curve;
3. inversion process to estimate shear wave velocity profile at the site.

It is very important to recognize that the above steps are strongly interconnected and their interaction must be adequately accounted for during the whole interpretation process.

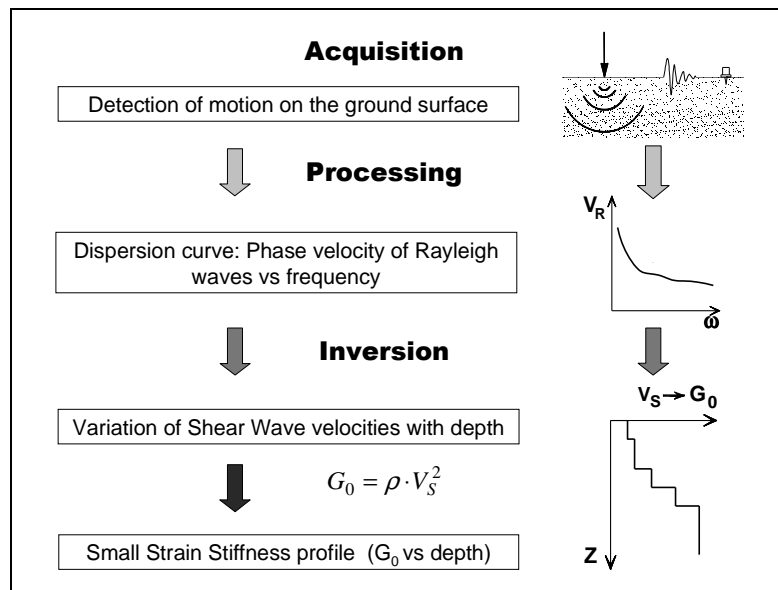


Figure 3 – Flow chart of surface wave tests.

2.1 Acquisition

Active surface wave tests (MASW) and refraction tests at Sestri Levante have been performed in October 2008 within the project S4 for the characterization of RAN sites.

Characteristics of sensors are reported in Table 1.

Test	GEOPHONE TYPE	NATURAL FREQUENCY	GEOPHONE NUMBER
MASW/Refraction	vertical SENSOR SM-6/U-B	4,5 Hz	48

Table 1 Sestri Levante: receiver characteristics

The total length of the array is 32.9m. The source is a 5kg sledge hammer. Geometry parameters are summarized in Table 2.



Test	GEOF. N.	SPACING	SOURCE TYPE	ACQUISITION WINDOW	SAMPLING INTERVAL	STACK
MASW	48	0.7 m	Hammer	T = 0.512 s	$\Delta t = 0.25$ ms	10/12/15

Table 2 Sestri Levante: Acquisition parameters

2.2 Processing of surface waves

The processing allows the experimental dispersion curve to be determined.

Multichannel data are processed using a double Fourier Transform, which generates the frequency-wave number spectrum, where the multimodal dispersion curve is easily extracted as the location of spectral maxima.

2.3 Inversion of surface waves

The solution of the inverse Rayleigh problem is the final step in test interpretation. The solution of the forward problem forms the basis of any inversion strategy; the forward problem consists in the calculation of the function whose zeros are dispersion curves of a given model. Assuming a model for the soil deposit, model parameters of the best fitting subsoil profile are obtained minimizing an object function.

The subsoil is modelled as a horizontally layered medium overlaying a halfspace, with constant parameter in the interior of each layer and linear elastic behaviour. Model parameters are thickness, S-wave velocity, P-wave velocity (or Poisson coefficient), and density of each layer and the halfspace. The inversion is performed on S-wave velocities and thicknesses, whereas for the other parameters realistic values are chosen a priori. The number of layer is chosen applying minimum parameterization criterion.

In surface wave analysis it is very common to perform the inversions using only the fundamental mode of propagation. This approach is based on the assumption that the prevailing mode of propagation is the fundamental one; if this is partially true for normal dispersive sites, in several real cases the experimental dispersion curve is on the contrary the result of the superposition of several modes. This may happen in particular when velocity inversions or strong velocity contrasts are present in the shear wave velocity profile. In these stratigraphic conditions the inversion of the only fundamental mode will produce significant errors; moreover all the information contained in higher propagating modes is not used in the inversion process. Therefore, the fundamental mode inversion does not use all the available information, and this affects the result accuracy.

The use of higher modes in the inversion can be helpful both in the low frequency range, in order to increase the investigation depth and to avoid the overestimation of the bedrock velocity, and in the high frequency range in order to provide a more consistent interpretation of shallow interfaces and increase model parameter resolution.

In this work a multimodal misfit function has been used. This function is based on the Haskell-Thomson method for dispersion curve calculation (Thomson 1950, Haskell 1953, Herrmann e Wang 1980, Herrmann 2002). For a given subsoil model, and an experimental data, the misfit of the model is the L^1 norm of the vector containing the absolute value of the determinant of the Haskell-Thomson matrix (which is zeros in correspondence of all



the modes of the dispersion curves of the numerical model) evaluated in correspondence of the experimental data (Maraschini et al. 2008). The misfit function adopted has the advantage of being able to include any dispersive event present in the data without the need of specifying to which mode the data points belong to, avoiding errors arising from mode misidentification, in particular in the low frequency range.

This misfit function is applied in a Global Search Methods (GSM), in order to reduce the possibility of falling in local minima. A uniform random search is applied; ranges for the inversion have been chosen, for the different sites, based on the experimental dispersion curves; in particular the range of the S-wave half space velocity is close to the maximum surface wave velocity retrieved on experimental data.

The results of the inversion are reported as the ensemble of the twenty shear wave velocity profiles which present the minimum misfits with respect to the experimental dispersion curve. In the figures reported a representation based on the misfit is adopted for velocity profiles, so that the darkest colour corresponds to the profile whose dispersion curve has the lowest misfit and better approximation to the reference one; instead for dispersion curves the coloured surface under imposed to the experimental one is a misfit surface, whose zeros are synthetic dispersion curve of the best fitting model.

2.4 Numerical code

The numerical codes used for processing and inversion of surface waves are non commercial codes, implemented at Politecnico di Torino.

3 Sestri Levante – Surface wave results

The presence of stiff seismic interfaces between the sediments and the shallow bedrock, and of a stiff layer on the top, which is expected at the site location, can cause a relevance of higher mode generation in the surface wave apparent dispersion curve which must be taken into account in order to provide reliable results.

In Figure 4 an example of the f-k spectrum of the data collected at Sestri Levante is presented.

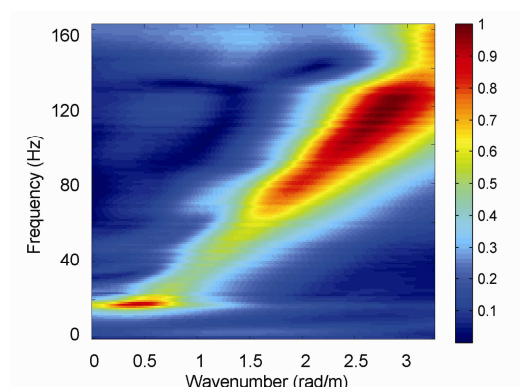


Figure 4 Sestri Levante – example of f-k spectrum

From the f-k spectra, several dispersion curves can be retrieved. From all these curves an average curve is estimated (Figure 5).

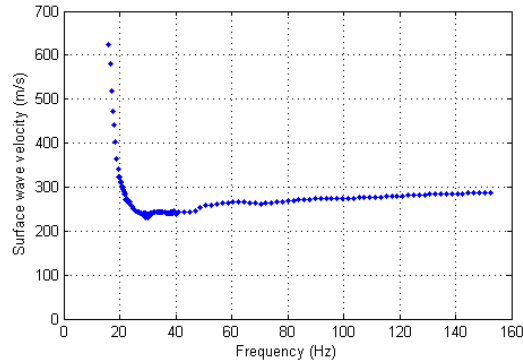


Figure 5 – Sestri Levante -Average apparent dispersion curve

Observing the dispersion curve, a steep velocity increase in the low frequency range, that can be due to a jump on the first higher mode in that range, and a velocity increase in the high frequency range, that can be due to a velocity inversion, can be remarked.

Data were inverted using a multimodal stochastic approach, the 20 best fitting profiles are plotted in Figure 6 a), profile colour depends on the misfit, from yellow to blue (best fitting profile). In Figure 7 the experimental dispersion curve is compared with the determinant surface of the best fitting model. We can note that the experimental points follow in the minima of the determinant surface.

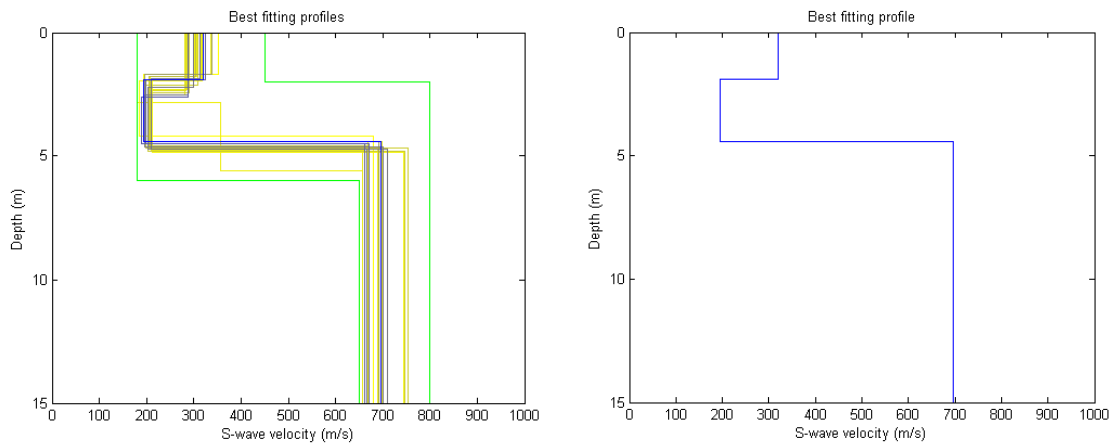


Figure 6 Sestri Levante – a) Monte Carlo results (from yellow to blue) of the inversion with the boundaries (green) b) Sestri Levante – Best fitting profile

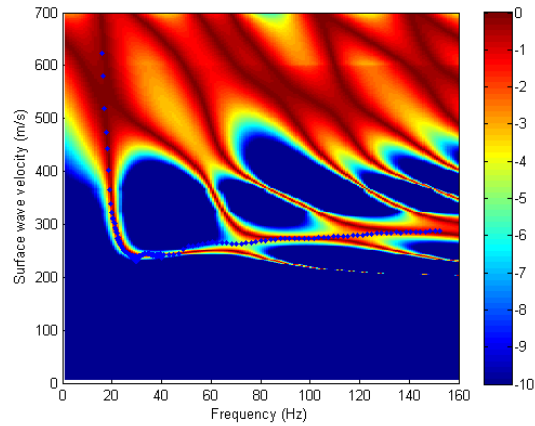


Figure 7 Sestri Levante – Experimental dispersion curve compared with the misfit surface of the best fitting model

The parameters of the best fitting profile are summarized in Table 3.

Vs (m/s)	Thickness (m)	Poisson coefficient	Density (T/m^3)
321	1.9	0.3	1.8
194	2.5	0.3	1.8
697		0.3	1.8

Table 3 Sestri Levante: subsoil parameters of the best fitting profile.



References

Project S4: ITALIAN STRONG MOTION DATA BASE, Deliverable # 6, Application of Surface wave methods for seismic site characterization, May 2009.

Foti S., Comina C., Boiero D., Socco L.V. (2009) "Non uniqueness in surface wave inversion and consequences on seismic site response analyses", *Soil Dynamics and Earthquake Engineering*, Vol. 29 (6), 982-993.

Haskell, N., 1964, Radiation pattern of surface waves from point sources in a multilayered medium: *Bulletin of seismological society of America*, 54, no. 1, 377-393.

Herrmann, R. B., and C. Y. Wang, 1980, A numerical study of p-, sv- and sh- wave generation in a plane layered medium: *Bulletin of seismological society of America*, 70, no. 4, 1015-1036.

Herrmann, R. B., 2002, SURF code, www.eas.slu.edu/People/RBHerrmann/.

Maraschini, M., F. Ernst, D. Boiero, S. Foti, and L.V. Socco, 2008, A new approach for multimodal inversion of Rayleigh and Scholte waves: *Proceedings of EAGE Rome*, expanded abstract.

Thomson, W. T, 1950., Transmission of elastic waves through a stratified solid medium: *Journal of Applied Physics*, 21, no. 89.