



DATA-SET ANALYSIS

EVENTS SELECTION

156 Records
DPC-S5
Digital

432 Records
I.T.A.C.A.
Digital and analog

22 Records
R.A.N.
Digital

4.0 < Mw < 6.8

6 < R_Ipo (km) < 200

610 RECORDS
(each with 3 components)

241 STATIONS

1972 - 2004
Complete Selection

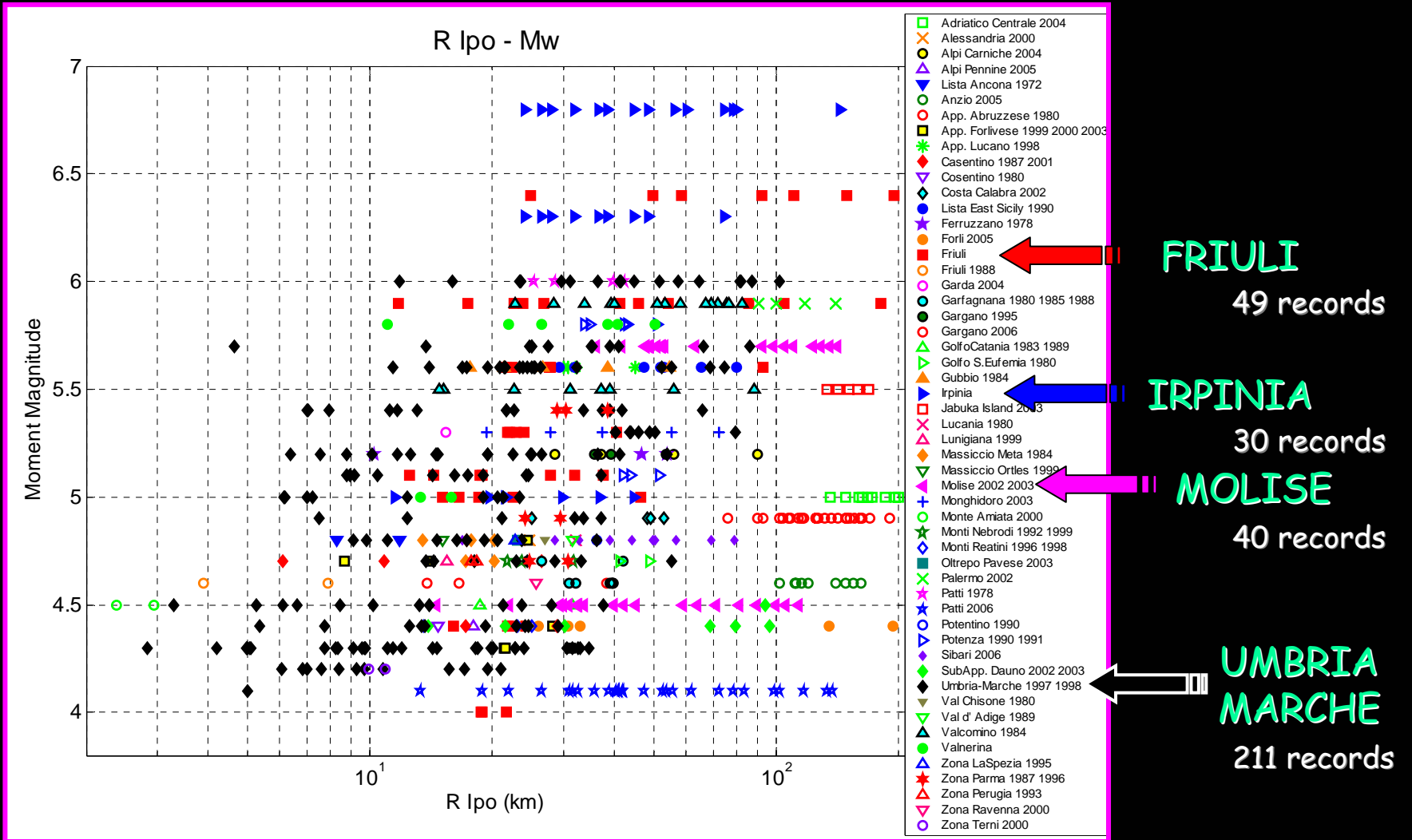
120 EVENTS

2005 - 2008
Arbitrary Selection

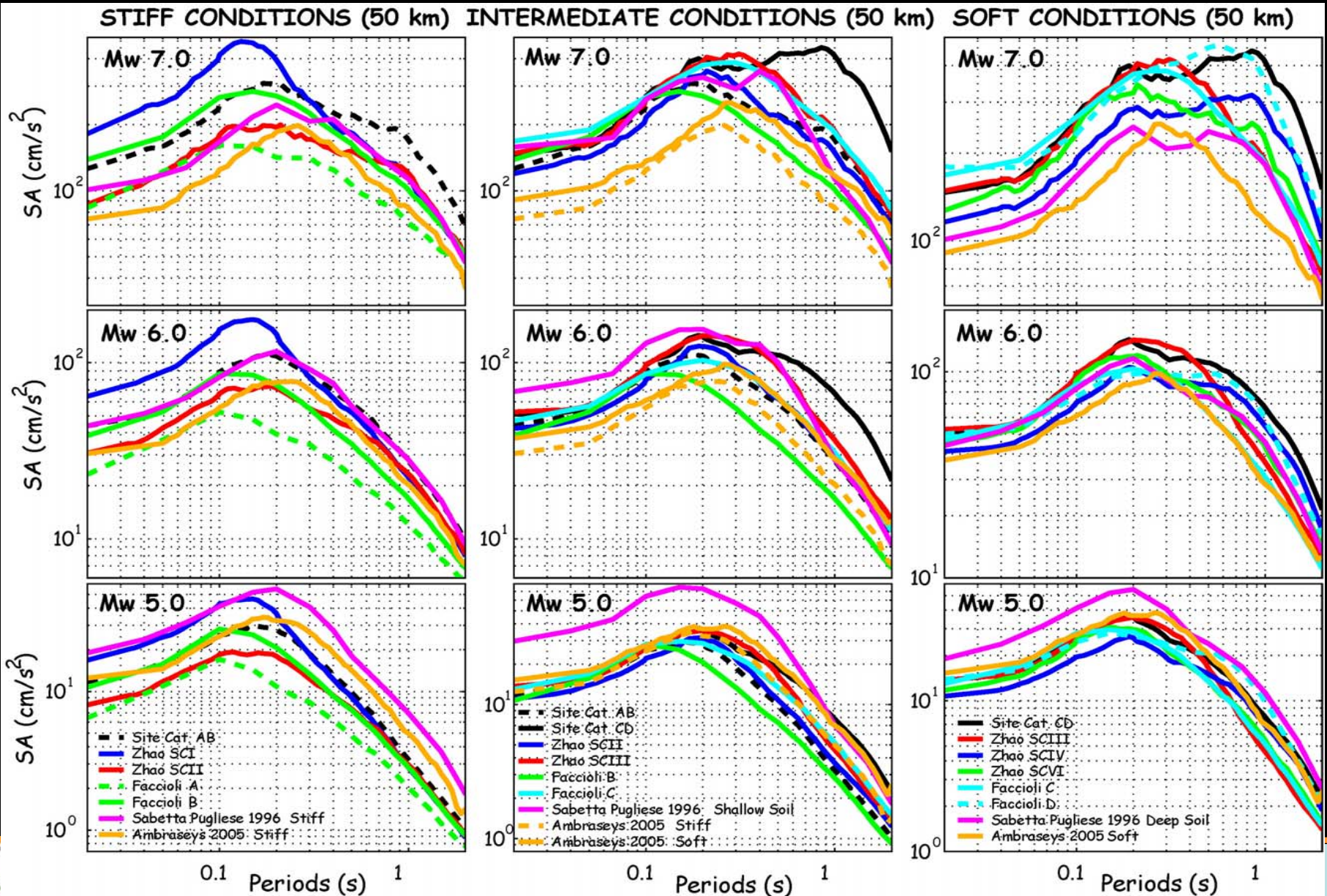


DATA-SET ANALYSIS

EVENTS SELECTION



Distance 50 km



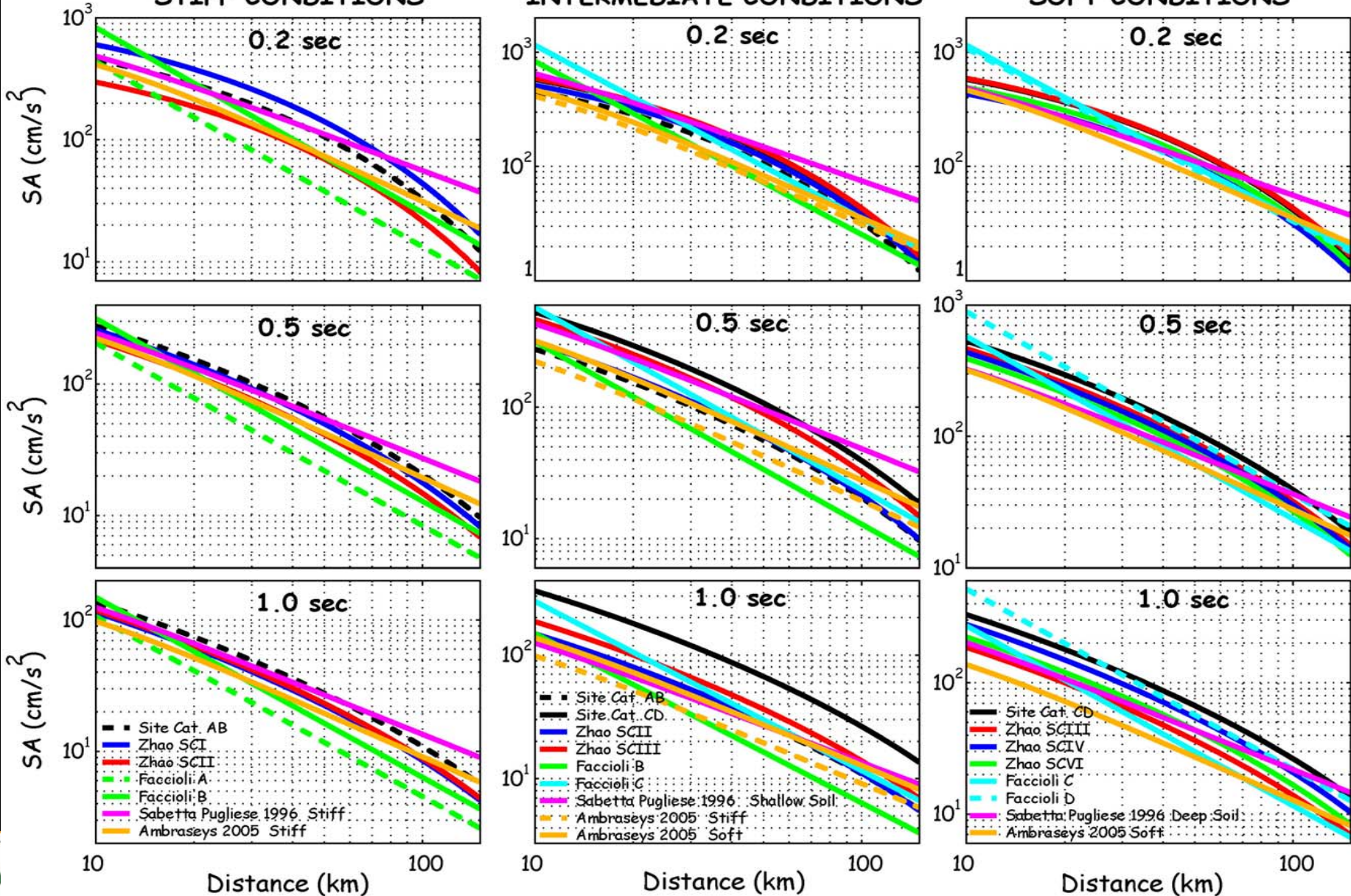
Task 4: Individuazione di siti e di registrazioni "anomale"

Mw 6.0

STIFF CONDITIONS

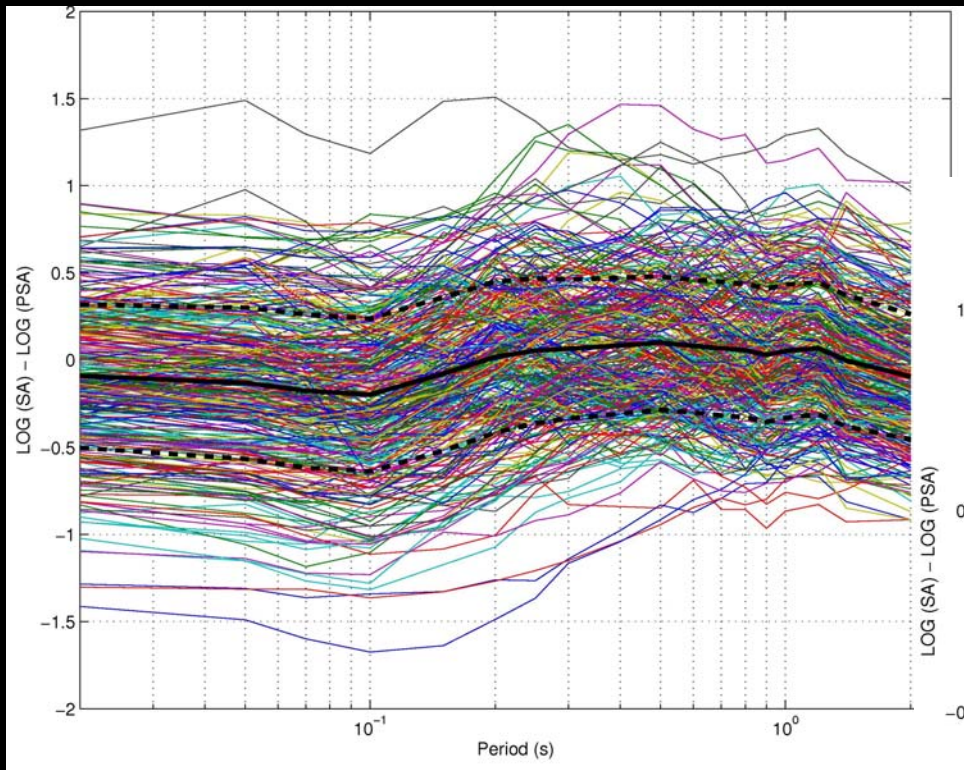
INTERMEDIATE CONDITIONS

SOFT CONDITIONS



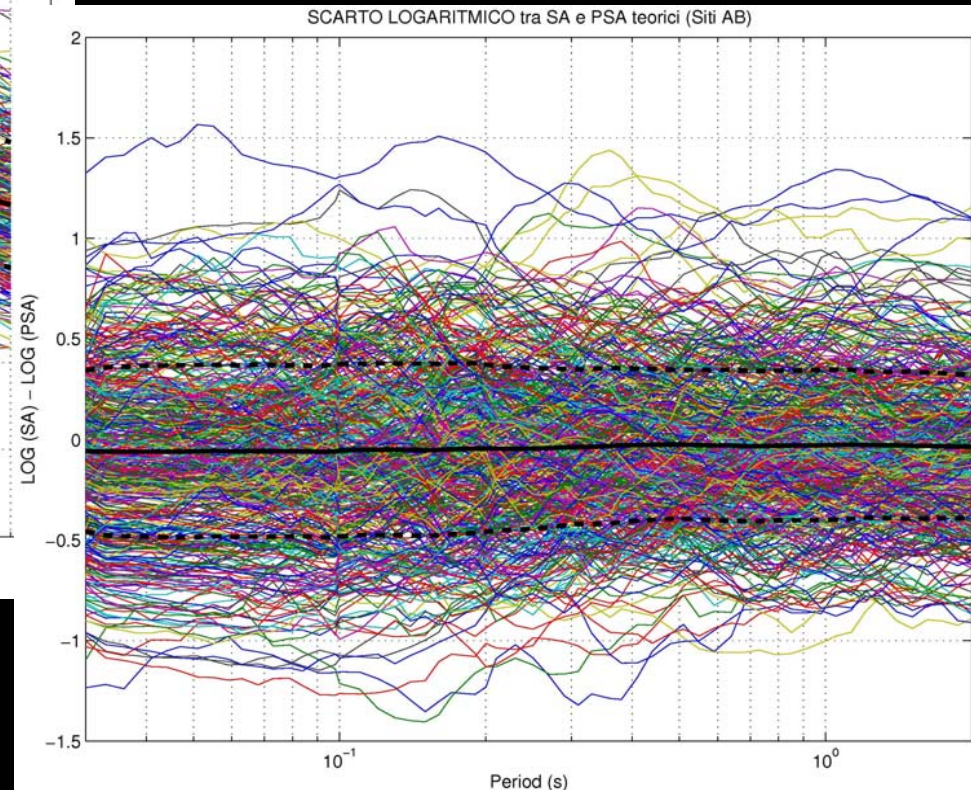


RESIDUALS SITE CAT. AB



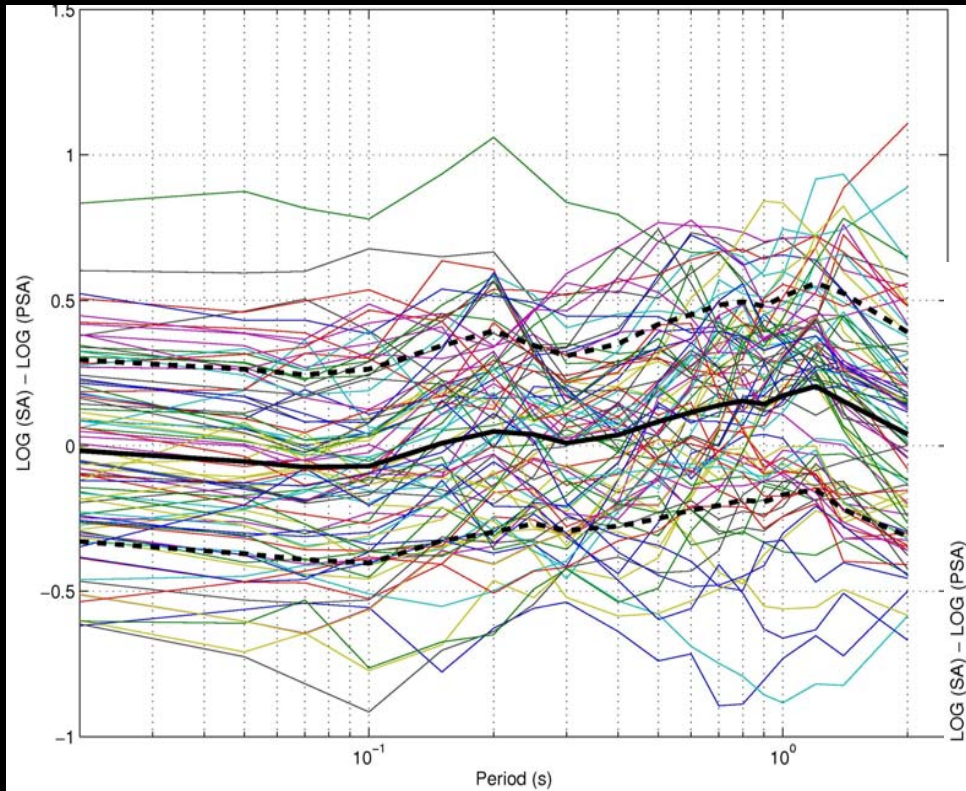
Cauzzi and Faccioli

Di Alessandro et. al.

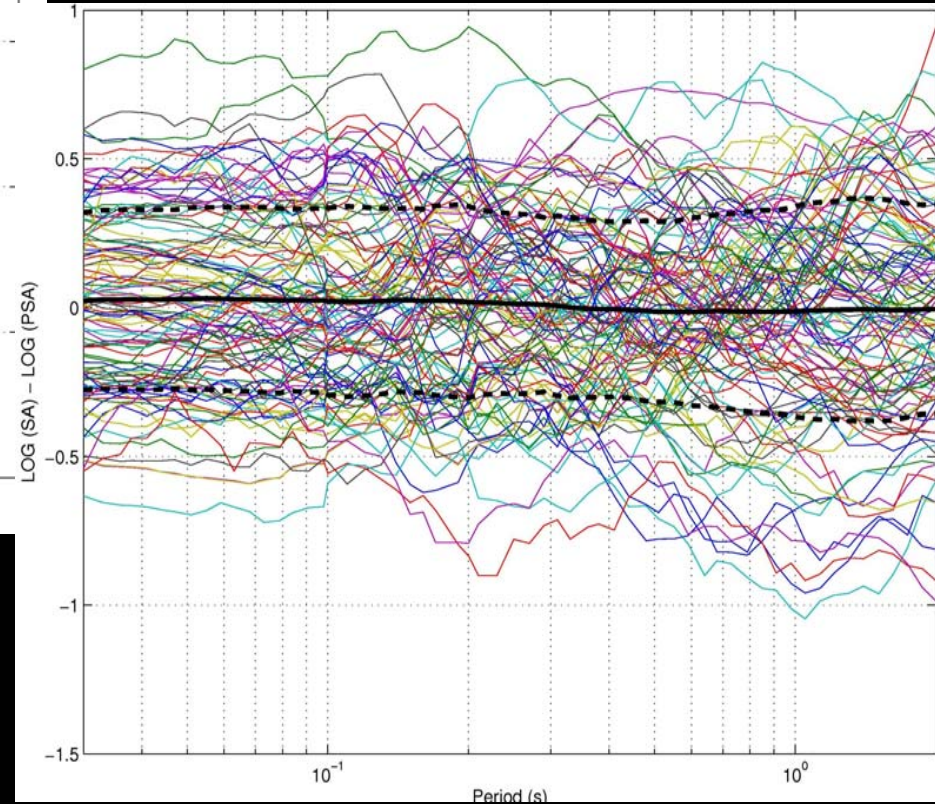




RESIDUALS SITE CAT. CD

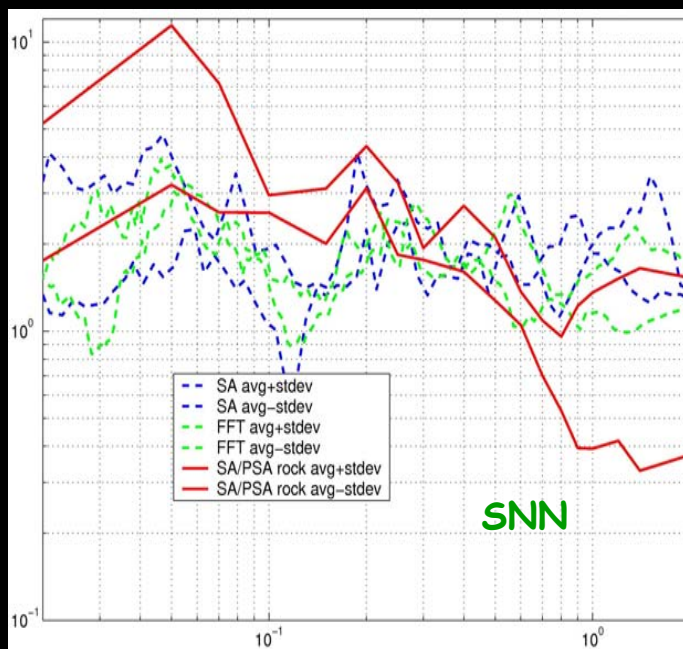
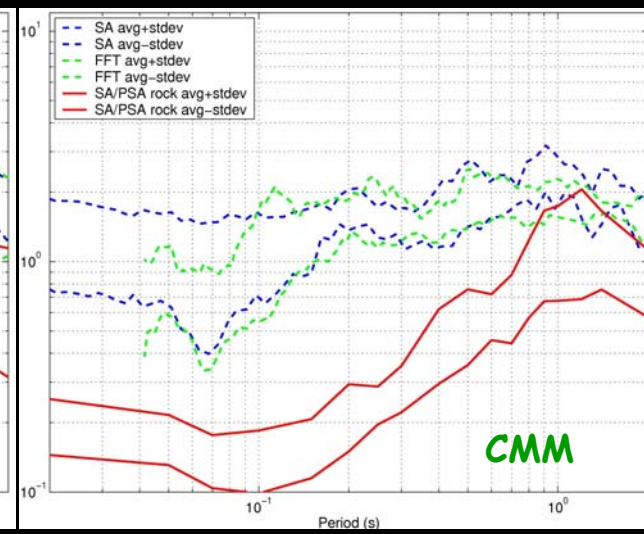
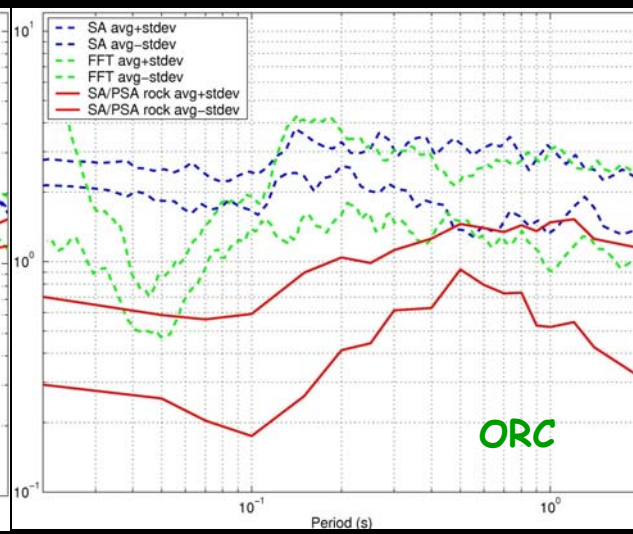
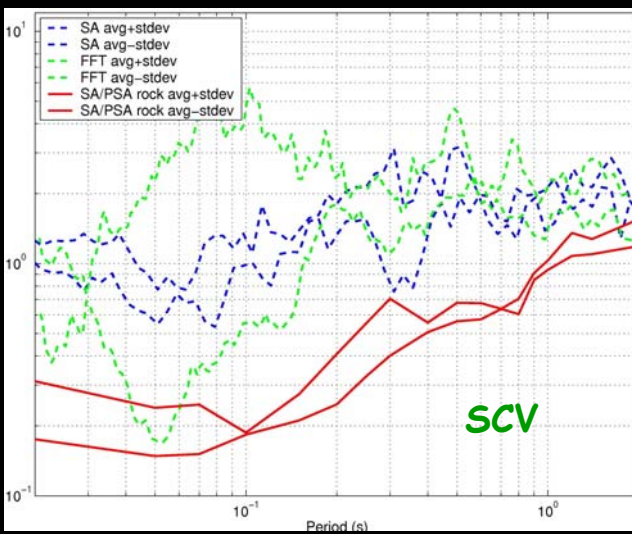


Di Alessandro et. al.



Cauzzi and Faccioli

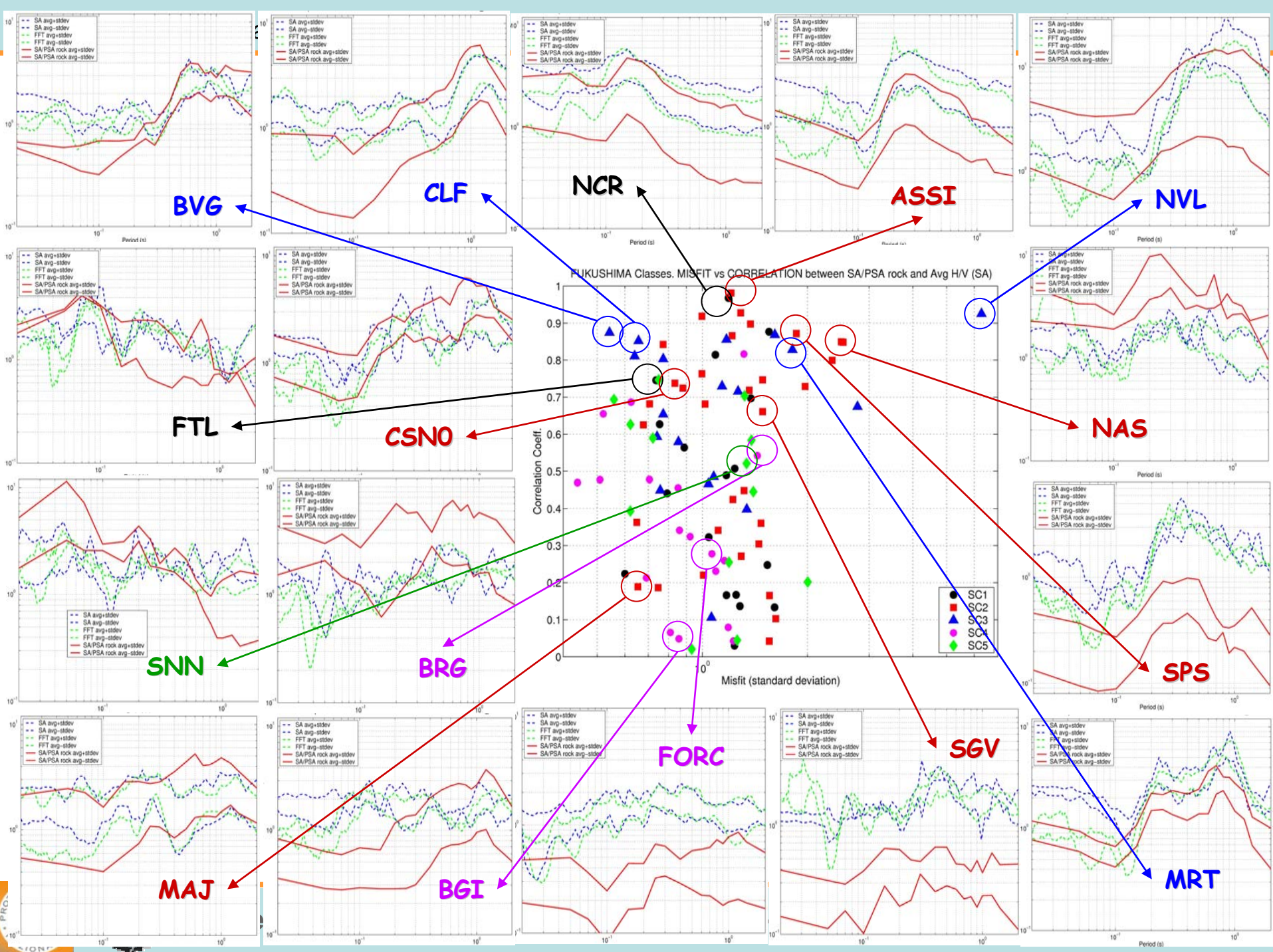
Task 4: Individuazione di siti e di registrazioni "anomale"



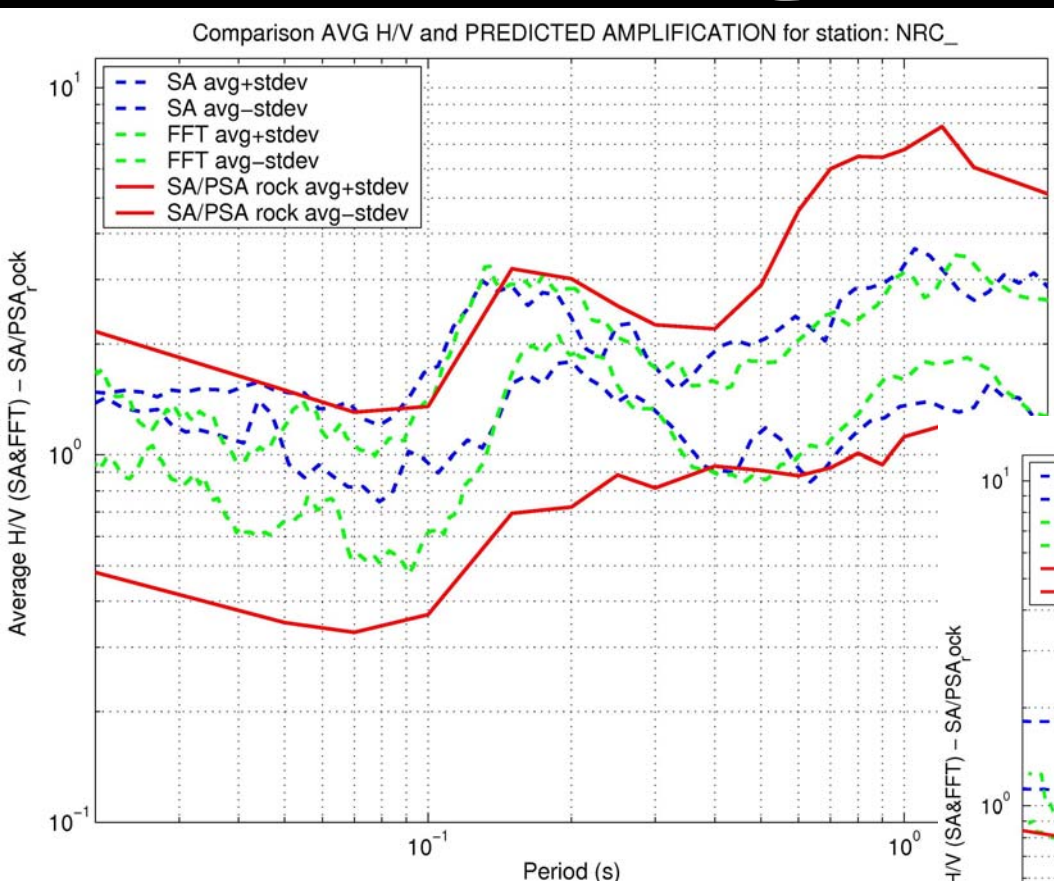
ANOMALOUS SOURCE?

ANOMALOUS SITE?

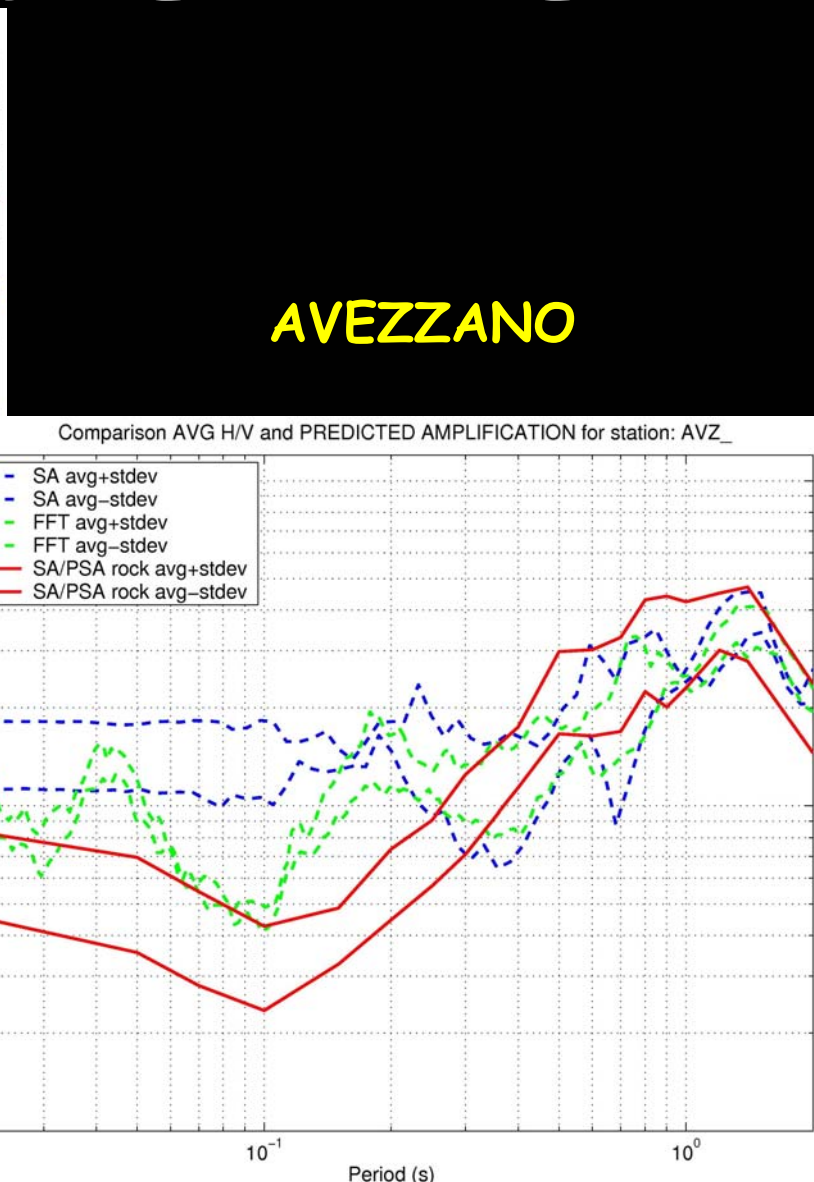
BOTH?



POTENTIAL TEST-SITES



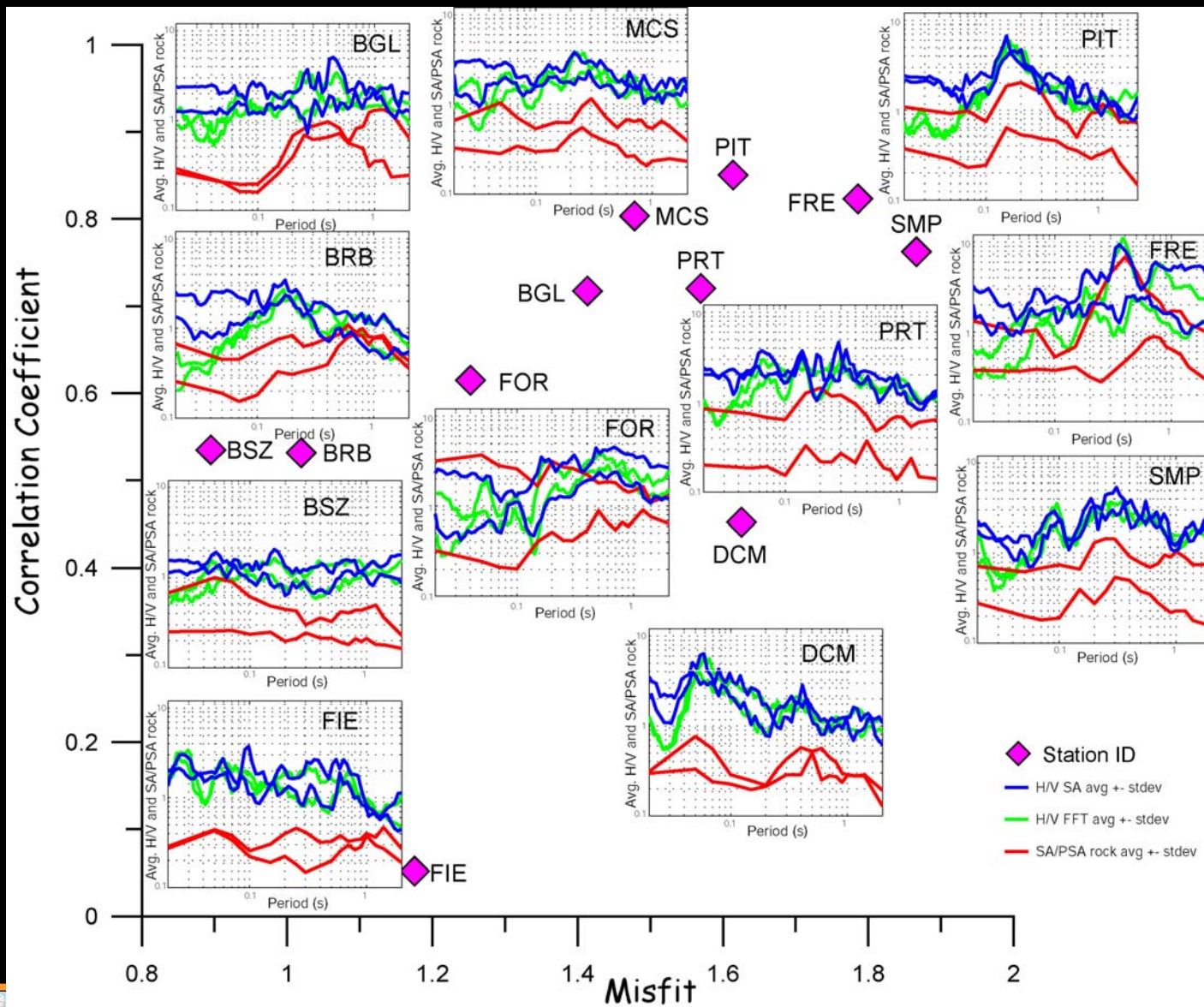
NORCIA



AVEZZANO

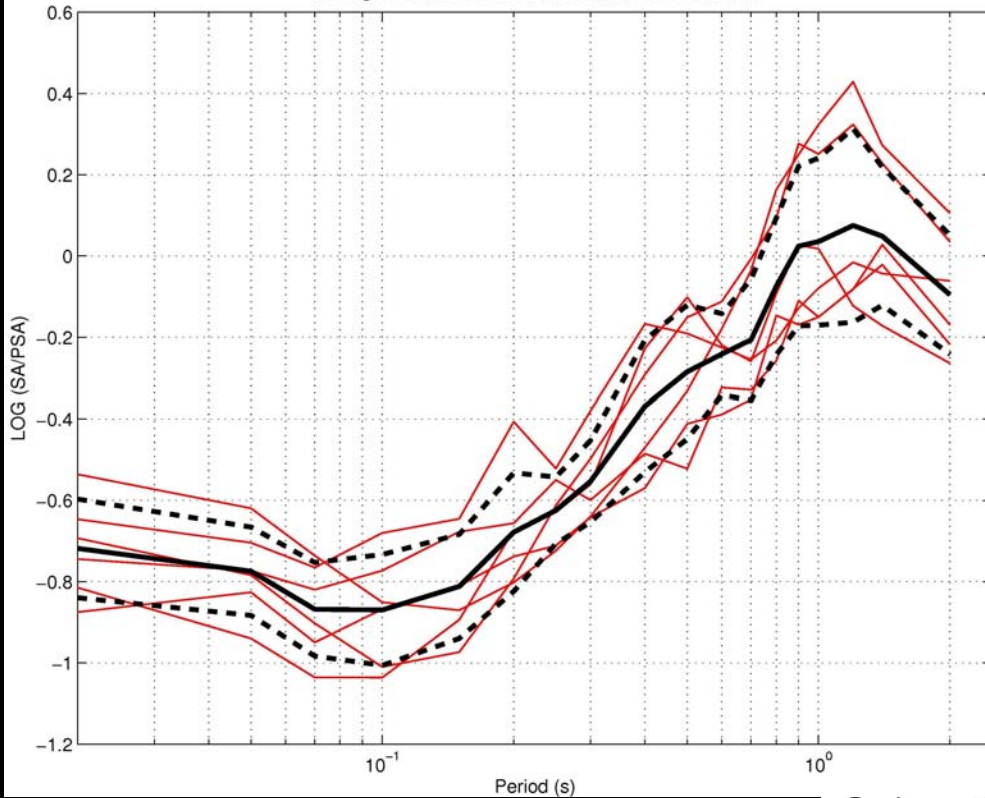


SELECTED STATIONS IN THE GARFAGNANA AREA

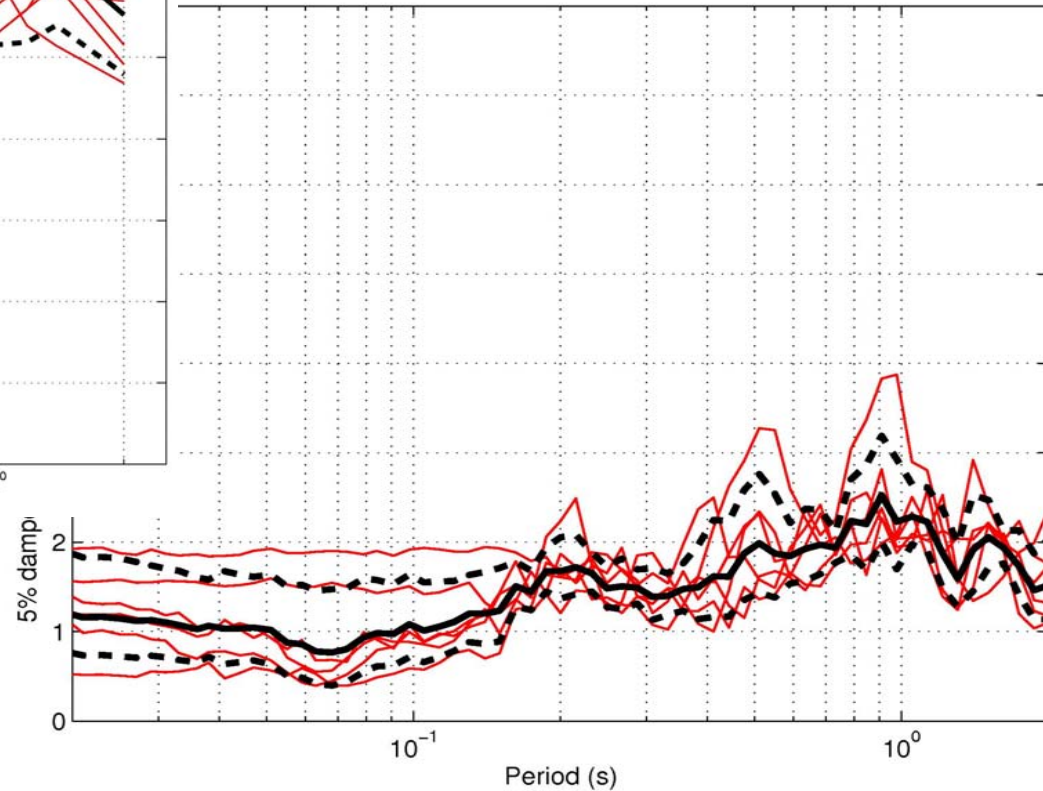


Castiglione Messer Marino

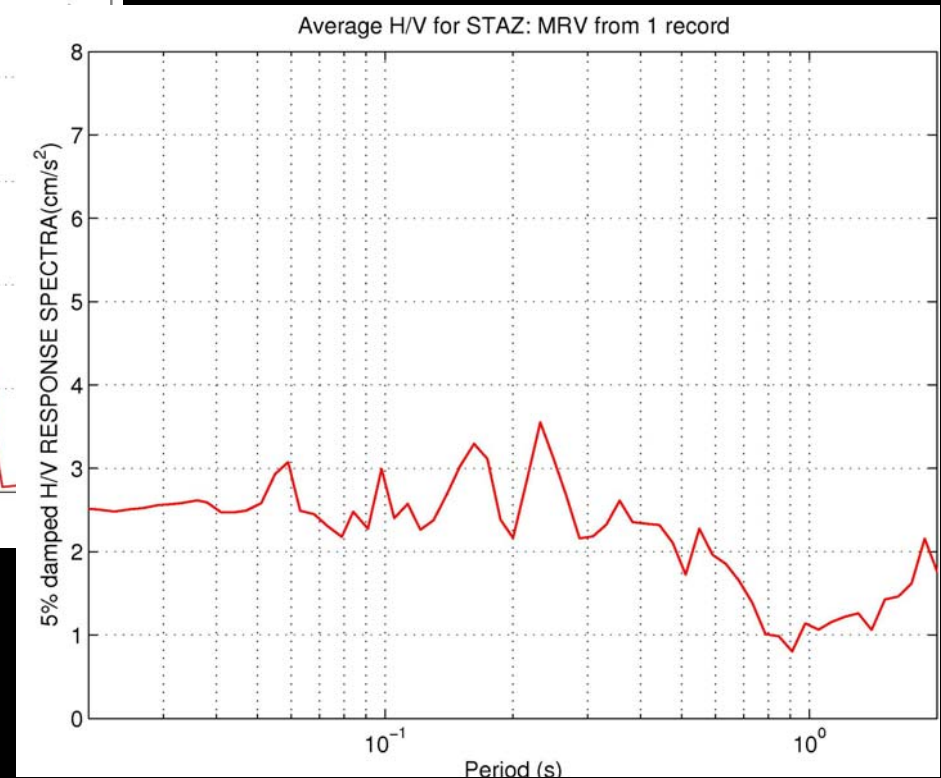
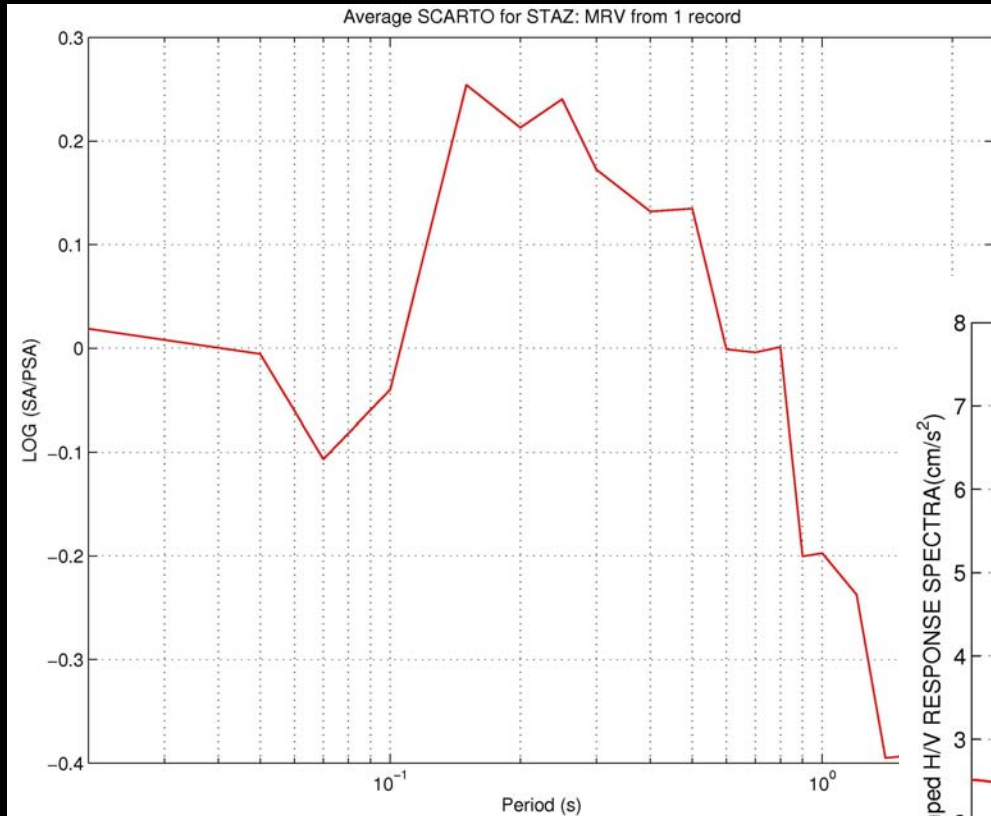
Average SCARTO $\pm \sigma$ for STAZ: CMM from 6 records



Average H/V $\pm \sigma$ for STAZ: CMM from 6 records

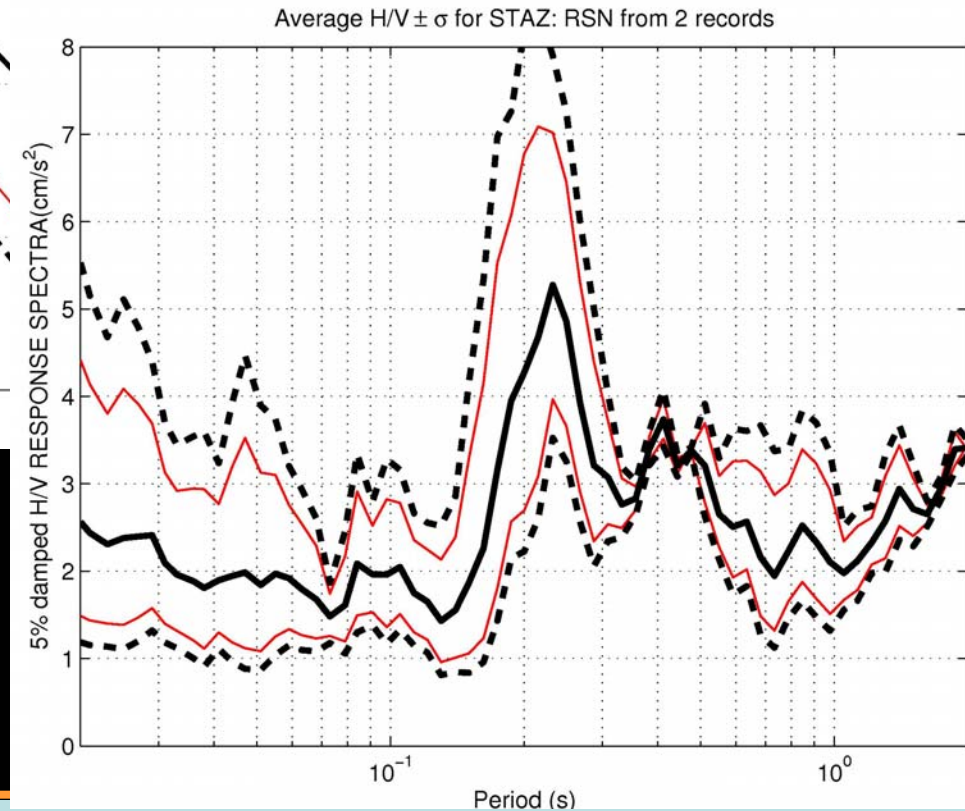
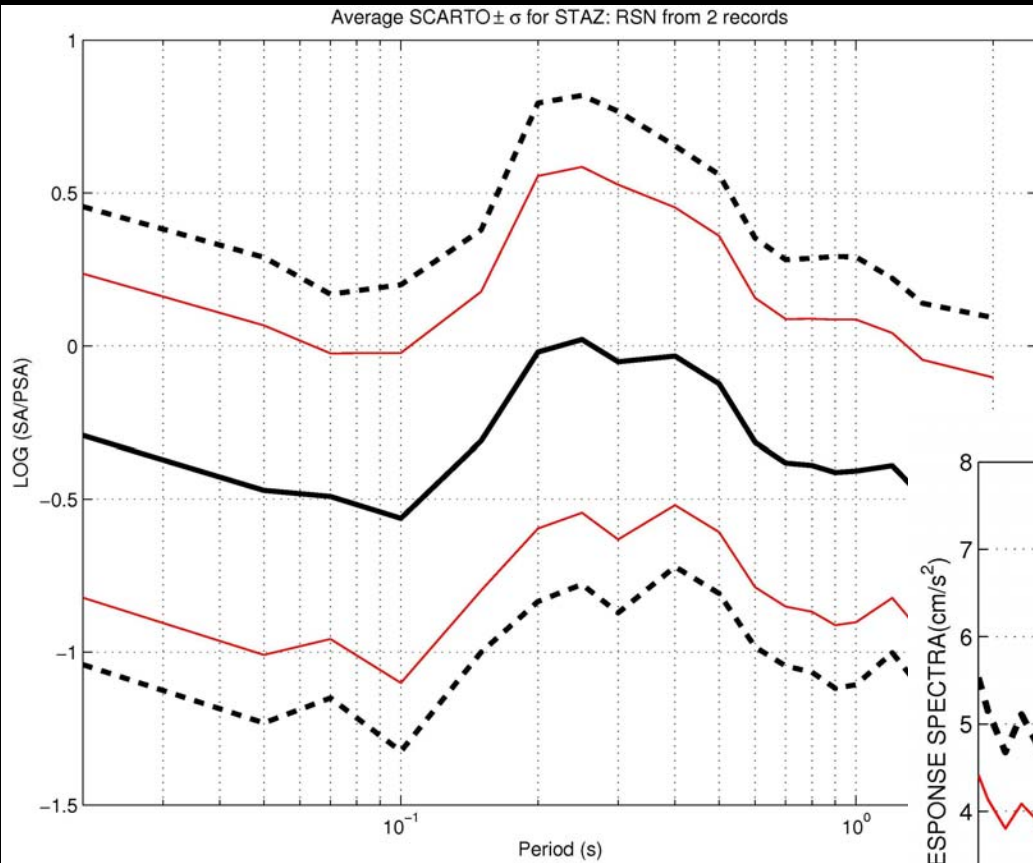


Marsico Vetere



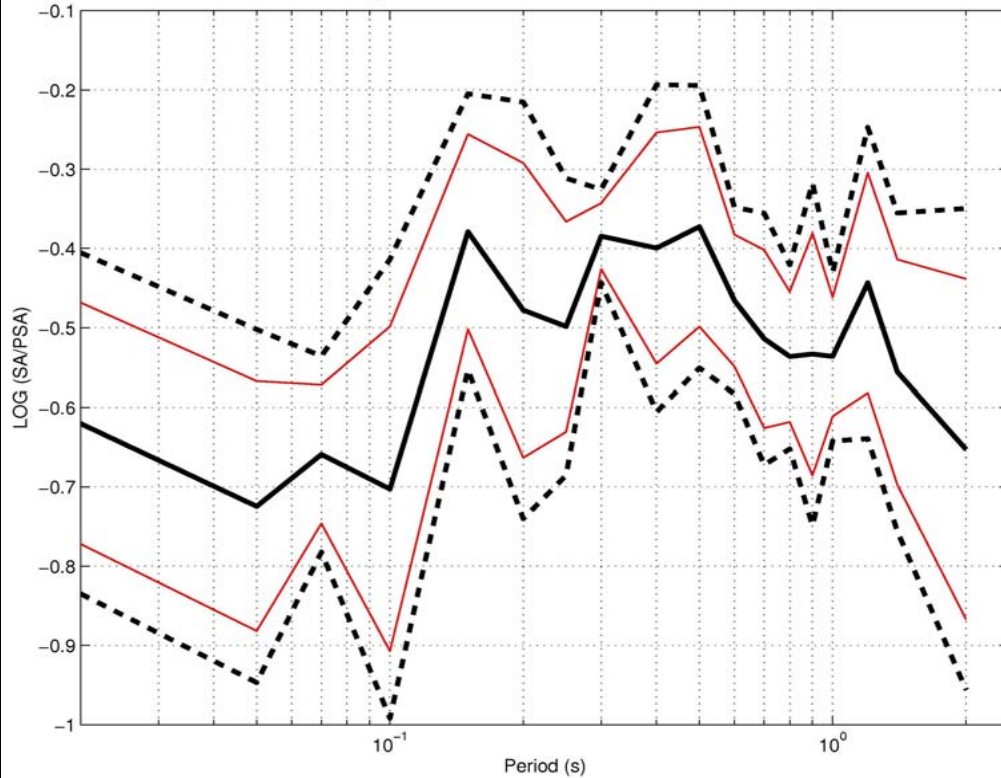
Task 4: Individuazione di siti e di registrazioni “anomale”

Rossano

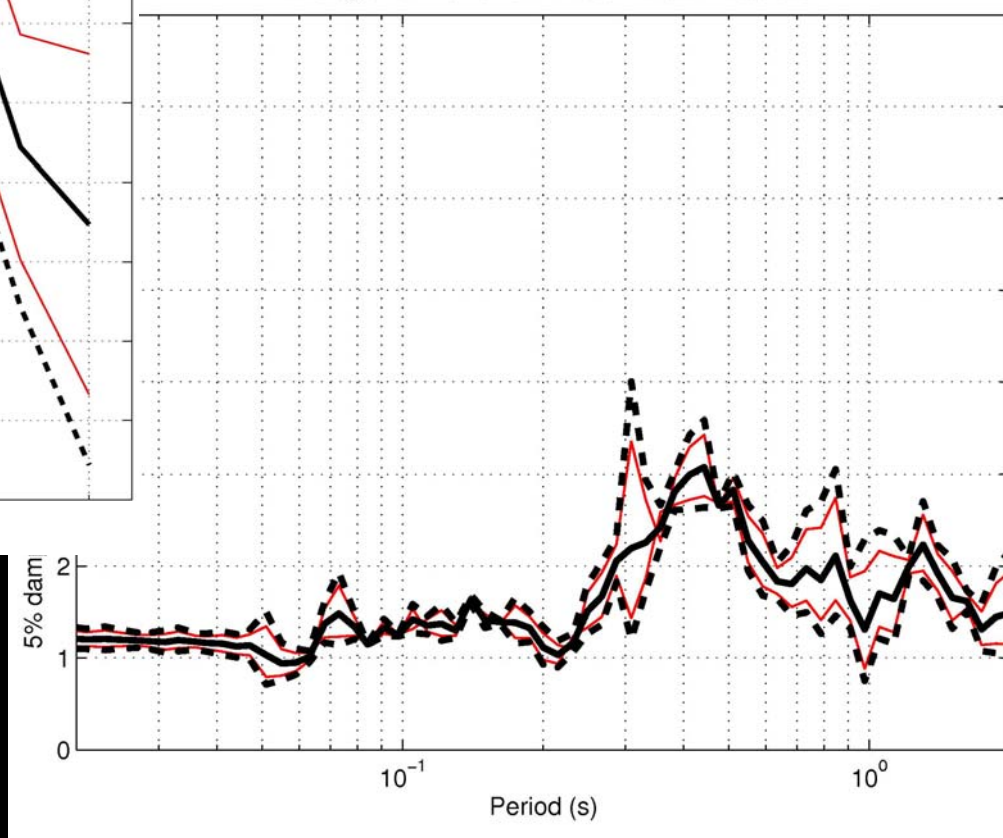


S. Giovanni in Fiore

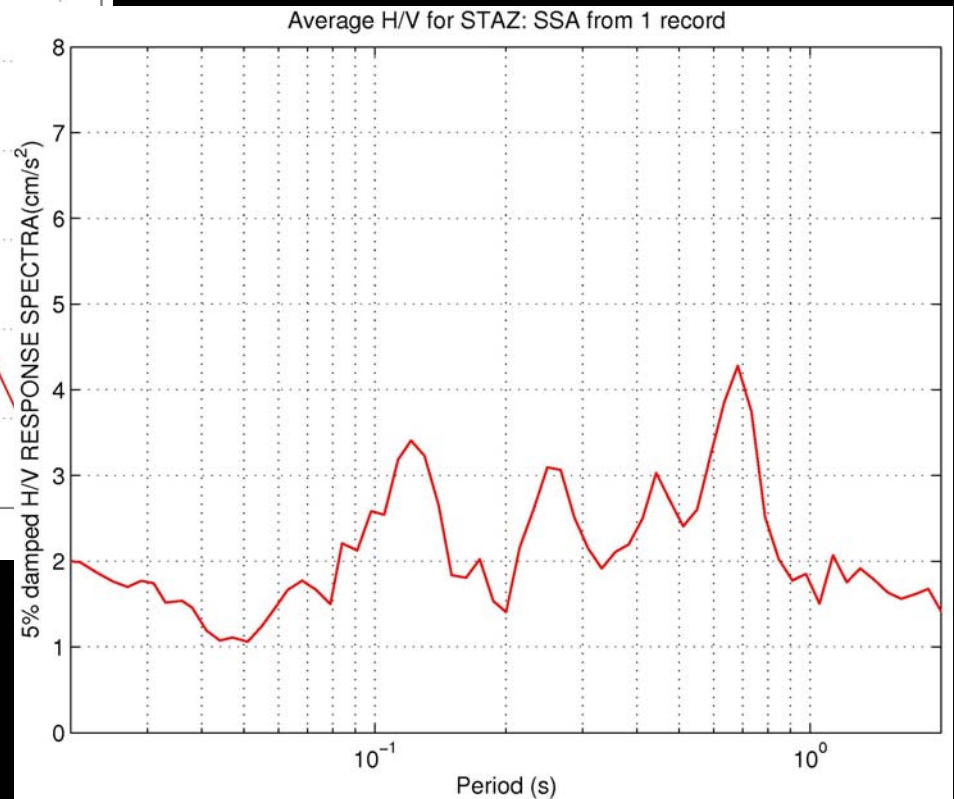
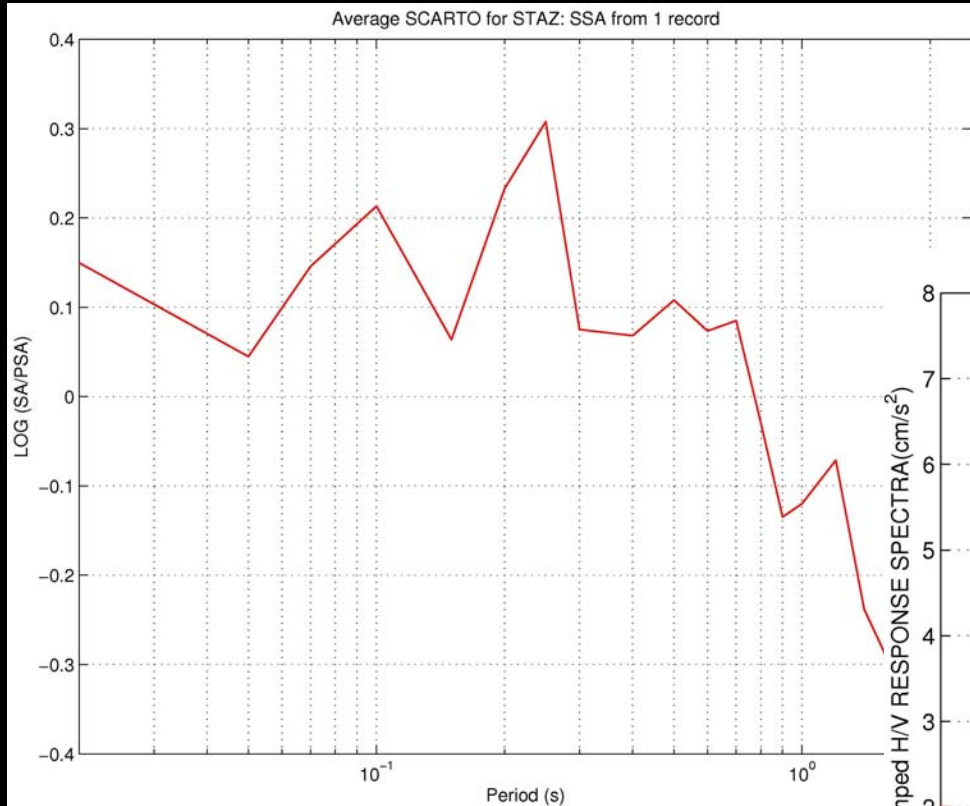
Average SCARTO $\pm \sigma$ for STAZ: SGV from 2 records



Average H/V $\pm \sigma$ for STAZ: SGV from 2 records

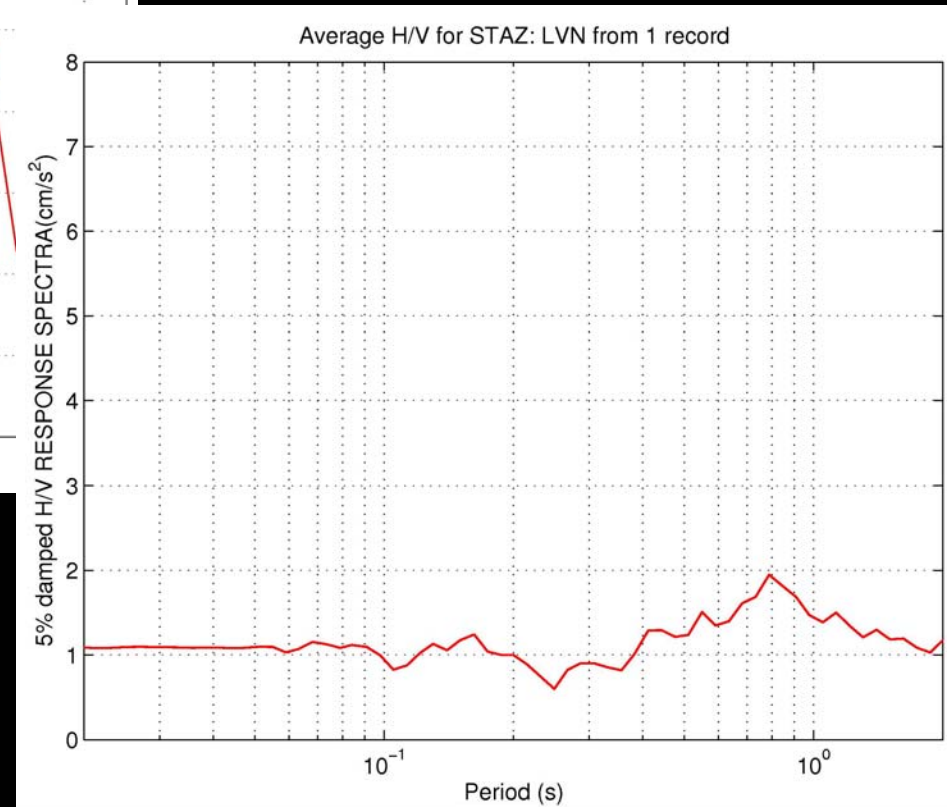
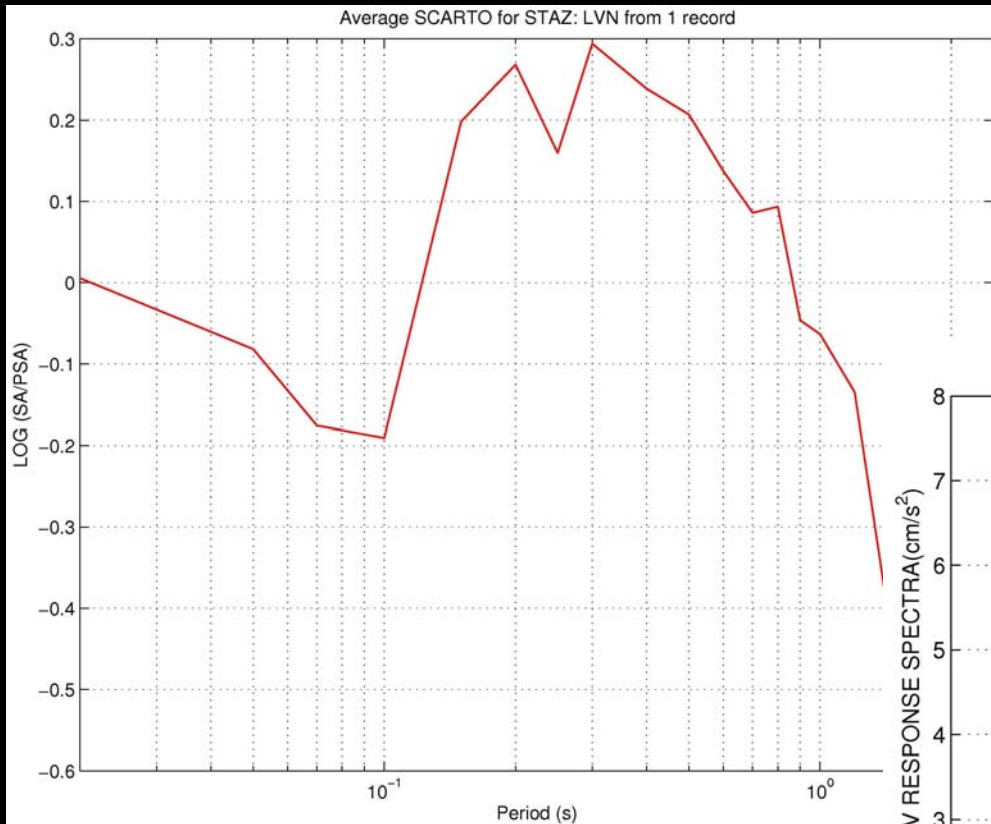


S. Stefano in Aspromonte

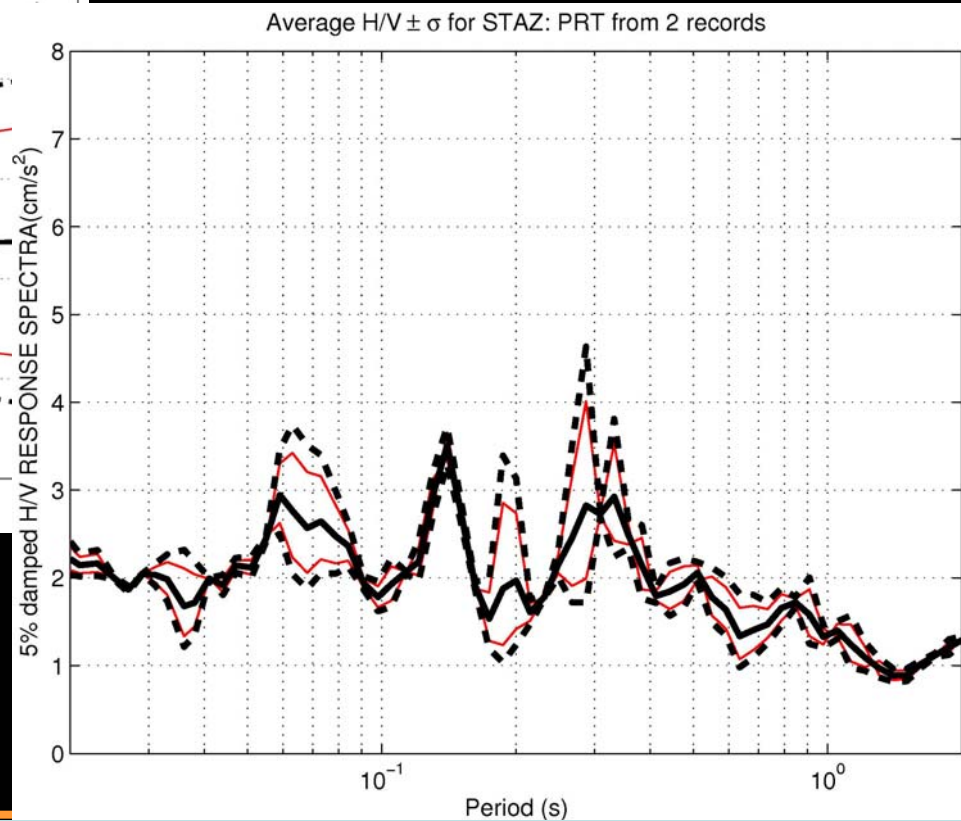
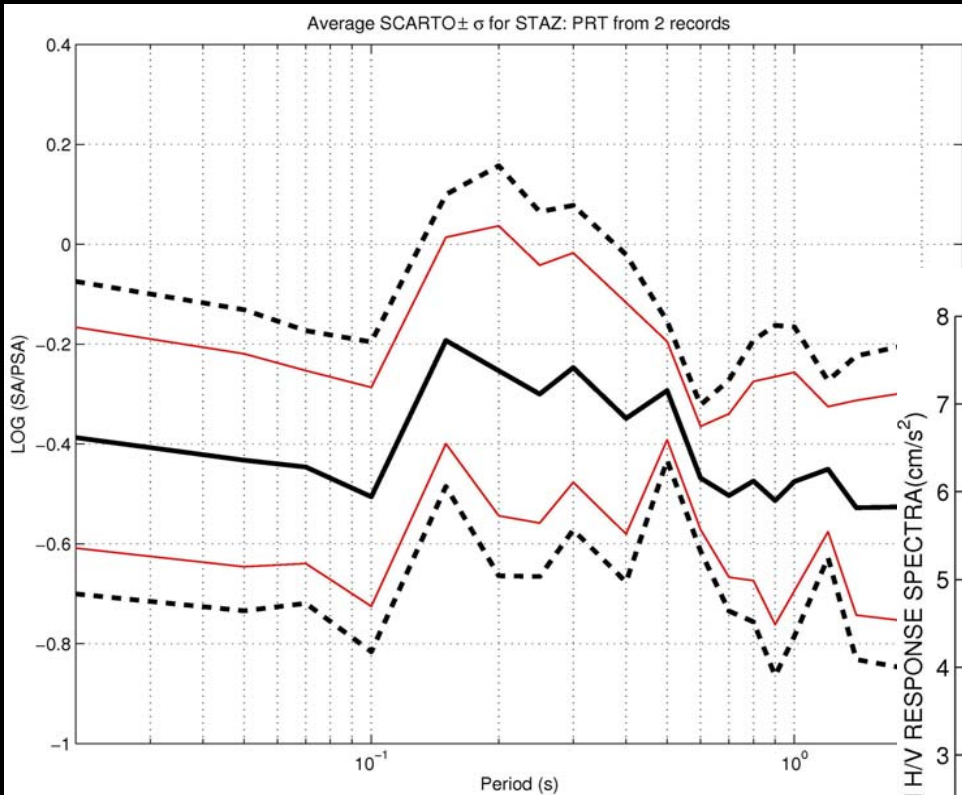


Task 4: Individuazione di siti e di registrazioni "anomale"

Laviano

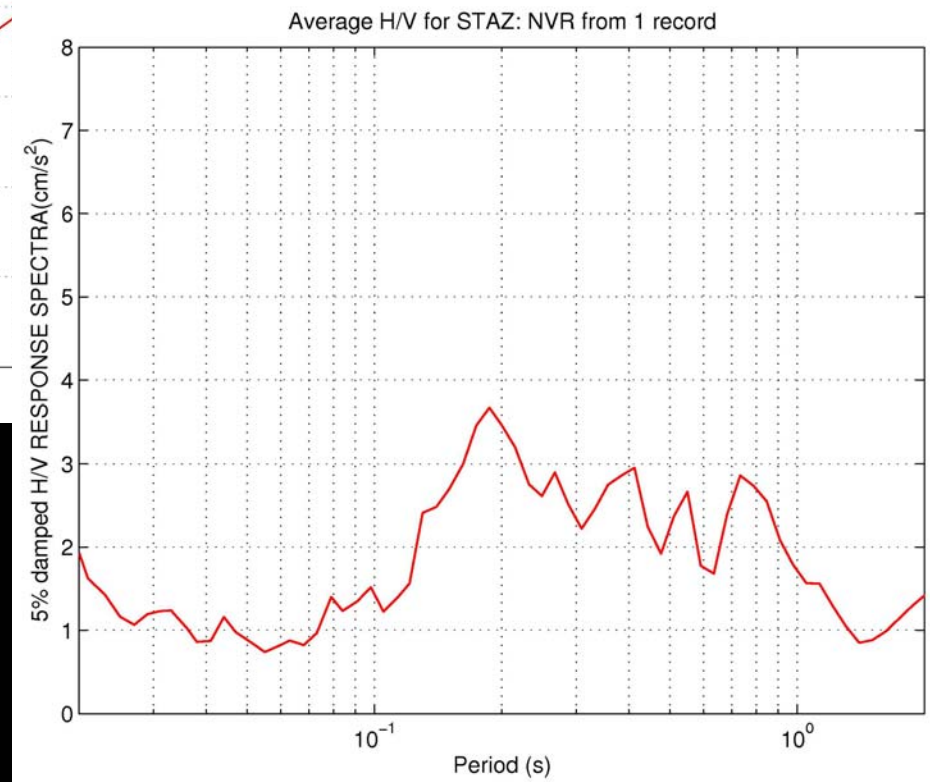
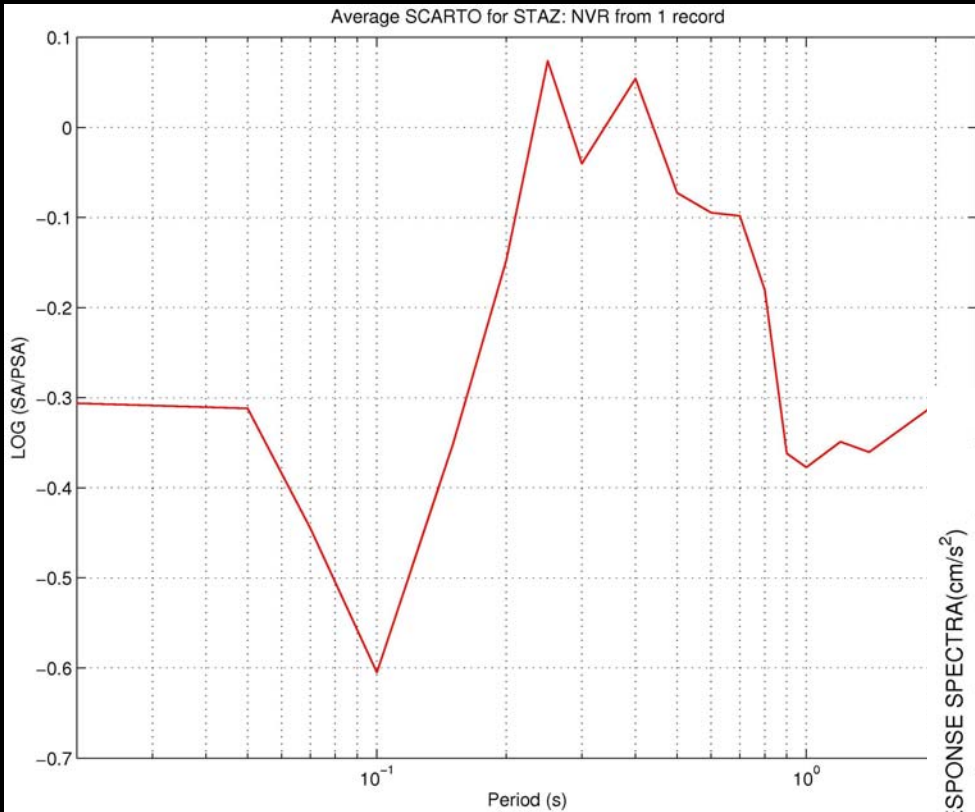


Porretta Terme



Task 4: Individuazione di siti e di registrazioni "anomale"

Novara di Sicilia



Messina Forte Gonzaga

